



Pilot Program-to-Program Articulation Agreement Projects Kick-Off Meeting

April 30, 2010

10 AM – 3 PM

**C. Ted Lick Wildwood Conference Center
Harrisburg Area Community College
Harrisburg, PA**

Meeting Agenda

- Pennsylvania College Credit Transfer System
- Pilot Program-to-Program Articulation Projects
- Using Competencies and Learning Outcomes to Create Effective Program-to-Program Articulation Agreements
- Meeting Expectations of the Program Articulation Committees (PACs)
- Individual PAC Meetings
- Joint PAC Wrap-Up

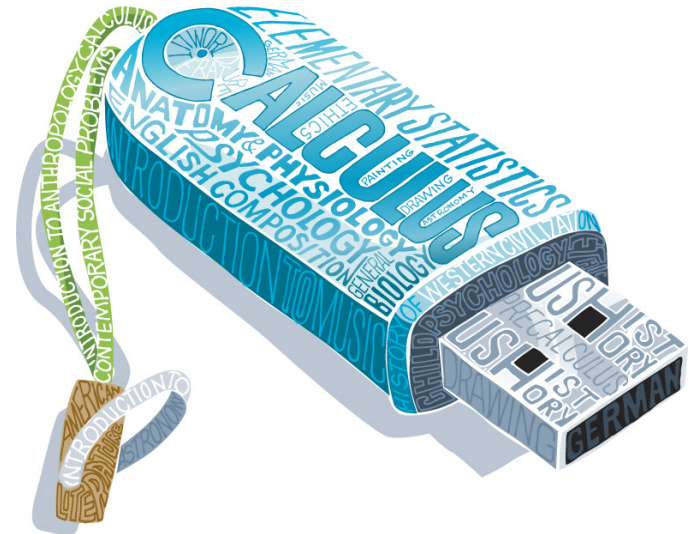


TAKE YOUR CREDITS WITH YOU.
Visit PAcollegetransfer.com



The Pennsylvania College Credit Transfer System

- Created by Act 114 of 2006
- Implemented Fall 2008
- Allows students to transfer up to 30 credits of foundation courses to any participating college **and** apply them toward the degree requirements of nearly any major offered by the participating colleges





Keys to the Transfer System

- 32 colleges and universities worked together to identify foundation courses that would transfer among them
- “Transfer Credit Framework” – an advising tool to assist students with selecting foundation courses for transfer to the participating institutions
- Public website – www.PAcollege-transfer.com
– provides 24/7 access to transfer information



Colleges Partnering to Benefit Students

Community Colleges

Bucks County Community College
Butler County Community College
Community College of Allegheny County
Community College of Beaver County
Community College of Philadelphia
Delaware County Community College
Harrisburg Area Community College
Lehigh Carbon Community College
Luzerne County Community College
Montgomery County Community College
Northampton County Community College
Pennsylvania Highlands Community College
Reading Area Community College
Westmoreland County Community College

PA State System of Higher Education

Bloomsburg University
California University
Cheyney University
Clarion University
East Stroudsburg University
Edinboro University
Indiana University
Kutztown University
Lock Haven University
Mansfield University
Millersville University
Shippensburg University
Slippery Rock University
West Chester University

State-related Institutions

Lincoln University
Pennsylvania College of Technology

Private Institutions

Lackawanna College
Saint Francis University

Transfer Credit Framework

- Framework contains a menu of 49 courses in six areas:

- English composition
- Public speaking
- Mathematics
- Natural sciences
- Social and behavioral sciences
- Fine arts and humanities



- Type of coursework typically completed in the first and second year of a 4-year degree program

Moving Forward

Act 50 of 2009 expands the College Credit Transfer System

- Statewide program-to-program transfer agreements that allow full associate degrees to transfer into bachelor degrees
- Expansion of the participation to state-related institutions by requiring all of the state-related universities to accept at least 30 credits from the Framework



Pilot Program Articulation Projects

- Transfer and Articulation Oversight Committee (TAOC) identified 3 pilot projects in different field of study areas:
 - Math
 - Psychology
 - Pre K-4 certification
- Initial effort designed to test approaches for developing agreements while at the same time allowing TAOC to develop articulation agreements in high demand degree programs



Pilot Program Articulation Projects

■ Purpose

- To outline an agreement that allows a student to transfer an associate degree to a 4-year institution and have at least 60 credits applied toward the graduation requirements of the parallel bachelor degree program
- To develop an implementation model that can be replicated or expanded for future articulation work related to the initiative
- To identify potential barriers
- To achieve early successes





Pilot PAC Charge

Develop a statewide program-to-program articulation agreement that allows a student to transfer an associate degree in the PACs respective field of study to a participating four-year institution **and** have at least 60 credits applied toward the graduation requirements of the parallel bachelor degree program.



Pilot PAC Deliverables

The pilot projects will result in two desired outcomes:

1. A written program-to-program articulation agreement that meets the charge and is honored by all of the participating TAOC institutions.
2. A written report outlining the approach used to develop the program-to-program agreement, the final outcome, barriers to success and recommendations for future development of statewide program-to-program articulation agreements.

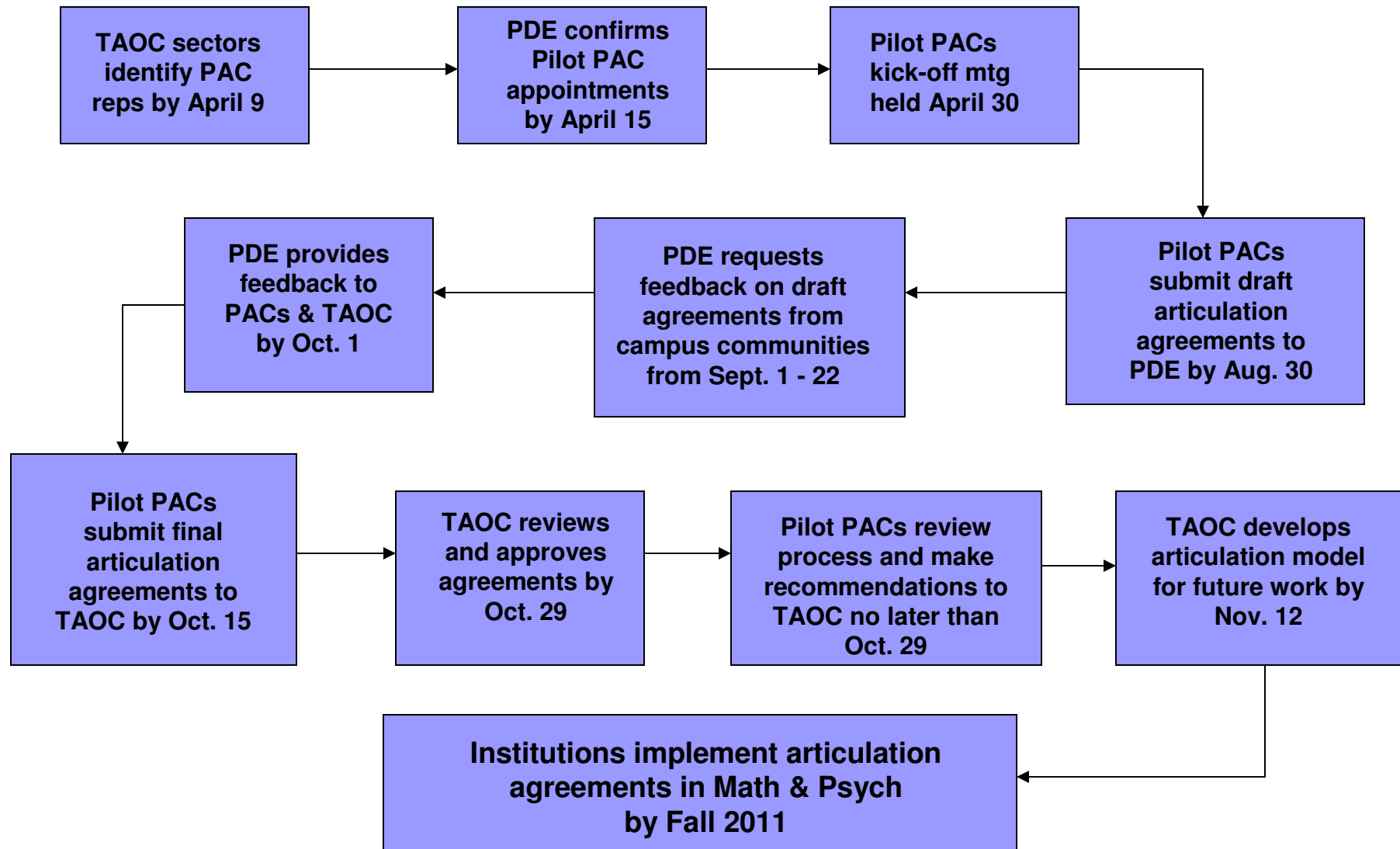


Pilot PAC Milestones

Between today and the end of October, each Pilot PAC will:

- Elect PAC co-chairs.
- Develop a project timeline specific to the PAC.
- Develop a draft articulation agreement for public comment.
- Develop a final articulation agreement and submit to the full TAOC for review and approval.
- Obtain final approval of the agreement from TAOC.
- Submit a final project report to PDE that includes the project outcome, an evaluation of the process/approach used and recommendations for future statewide articulation work.
- Submit monthly reports to PDE describing progress made, milestones achieved and next steps.

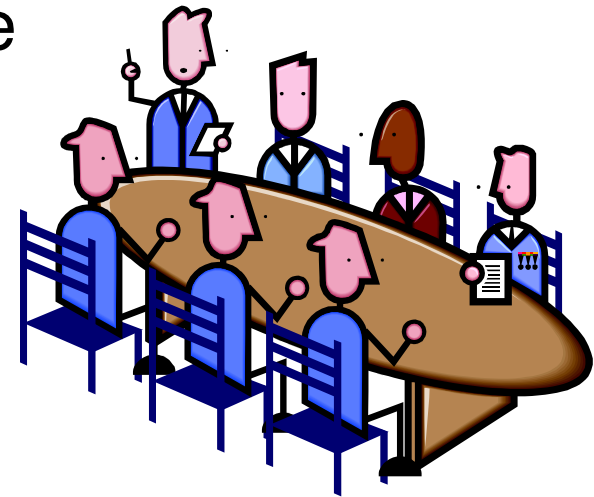
Pilot PAC Workflow & Timeline



Pilot PAC Composition

Total membership = 13

- **5** CC representatives – 4 teaching faculty & 1 non-teaching transfer representative
- **5** PASSHE representatives – 4 teaching faculty & 1 non-teaching transfer representative
- **2** Opt-in representatives – 1 teaching faculty member and 1 additional representative who may be either a faculty member *or* a transfer representative
- **1** TAOC member to be appointed by PDE





Pilot PACs (cont.)

- Co-chairs will lead each PAC – one chair representing associate-degree granting institutions and another representing bachelor-degree granting institutions.
- TAOC representatives will assist co-chairs with meeting facilitation and serve as the liaison between the PAC and the full TAOC.

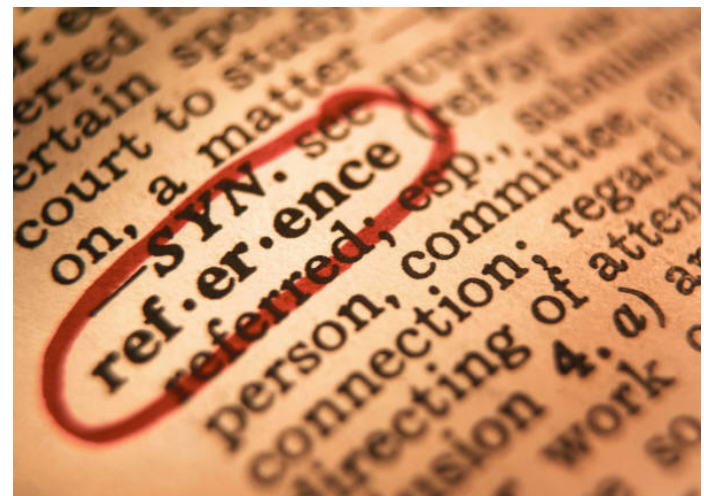


Pilot PACs (cont.)

- Two- and four-year institutions are equal partners in developing agreements.
- All members have an equal vote, except for the TAOC representative who serves as a non-voting member.
- Decisions should be made on group consensus.

PAC Tools, Resources & Reference Materials

- Desire2Learn Virtual Meeting Space
- Pennsylvania Transfer and Articulation Center (PA TRAC) – www.PAcollege-transfer.com
- PA Department of Education
- PA Commission for Community Colleges
- PA State System of Higher Education
- TAOC Members



Desire2Learn (D2L)

- Virtual meeting space
- Allows PAC members to meet and discuss, vote, review documents and much more without the need for face-to-face interaction
- Features:
 - Discussion Forums
 - Reference Materials
 - Voting & Surveying
 - Request for Resources
 - Frequently Asked Questions
- Technical issues? Contact Bob Hails at rhails@passhe.edu





Reference Materials on D2L

Under “Content”, you will find:

- Policy Statements
- Legislation – Act 114 of 2006 & Act 50 of 2009
- TAOC Contact List
- Overview of PACs
- List of colleges and universities included in the PAC agreement
- Degree requirements for participating institutions
- Curriculum Overlay

Pennsylvania Transfer and Articulation Center (PA TRAC)

- Accessible at www.PAcollege-transfer.com
- Use it to find:
 - Transfer policies
 - College and university websites
 - Guide to the Transfer Credit Framework
 - Databases to search for transfer courses and degree programs
 - Current catalog descriptions for courses



pennsylvania

TRANSFER AND ARTICULATION CENTER

PA TRAC - KEEPING YOU ON TRACK TO A COLLEGE DEGREE

www.PAcollegetransfer.com

PA TRAC - Microsoft Internet Explorer provided by PA Department of Education

File Edit View Favorites Tools Help

Back Forward Stop Home Search Favorites Refresh Print Mail Stop

Address http://www.patrac.org/ Go Links

Google www.patrac.org Go Bookmarks 57 blocked Check AutoLink AutoFill Send to www Settings

September 18, 2008 Register | Login



pennsylvania

TRANSFER AND ARTICULATION CENTER

PA TRAC - KEEPING YOU ON TRACK TO A COLLEGE DEGREE

PA TRAC Student Faculty & Advisors Administrators About PA TRAC Contact Us

Quick Links

- [Course Equivalencies](#)
- [Planning Your Transfer](#)
- [Learn the Language](#)
- [Common Questions](#)
- [Participating Colleges](#)
- [About PA TRAC](#)
- [Contact Us](#)

PA TRAC

Discover how students benefit from Pennsylvania's Transfer Credit Framework

Plan your course work to avoid taking classes that will not count toward your degree

Get step-by-step instruction for registering and transferring



Time to Register and not sure where to start?

Click [here](#) to find courses that transfer to any participating colleges and universities.

PA TRAC College Profiles

Check out information for transfer students. [View Profiles...](#)

[Har](#)Indiana University of the
Pennsylvania Main Campus



When it comes to planning your transfer, there is no time like the present.

Done

Start Internet

Inbox - Microsoft Outlook EqualEdOpp\$ on 'Edfs01'... Windows Media Player PA TRAC - Microsoft I... << 10:17 AM

Expectations of Today's Individual PAC Meetings

- Acquaint
- Brainstorm
- Organize
- Gather Information





Outcomes of PAC Meetings

- Select a recorder of meeting notes
- Elect co-chairs
- Identify resources and reference materials needed to continue work
- Develop a timeline specific to the PAC that leads to the milestones and deliverables
- Determine the PACs next steps



Meeting Wrap-Up

- PAC co-chairs
- Resources, tools or other relevant materials
- D2L
- PAC Timeline
- Communication
- Questions & Comments



Pilot Project Coordinator at PDE

Julie Rutledge
Higher Education Associate

Office of Access Initiatives
Pennsylvania Department of Education
333 Market Street
Harrisburg, PA 17126-0333

www.pde.state.pa.us
jurutledge@state.pa.us